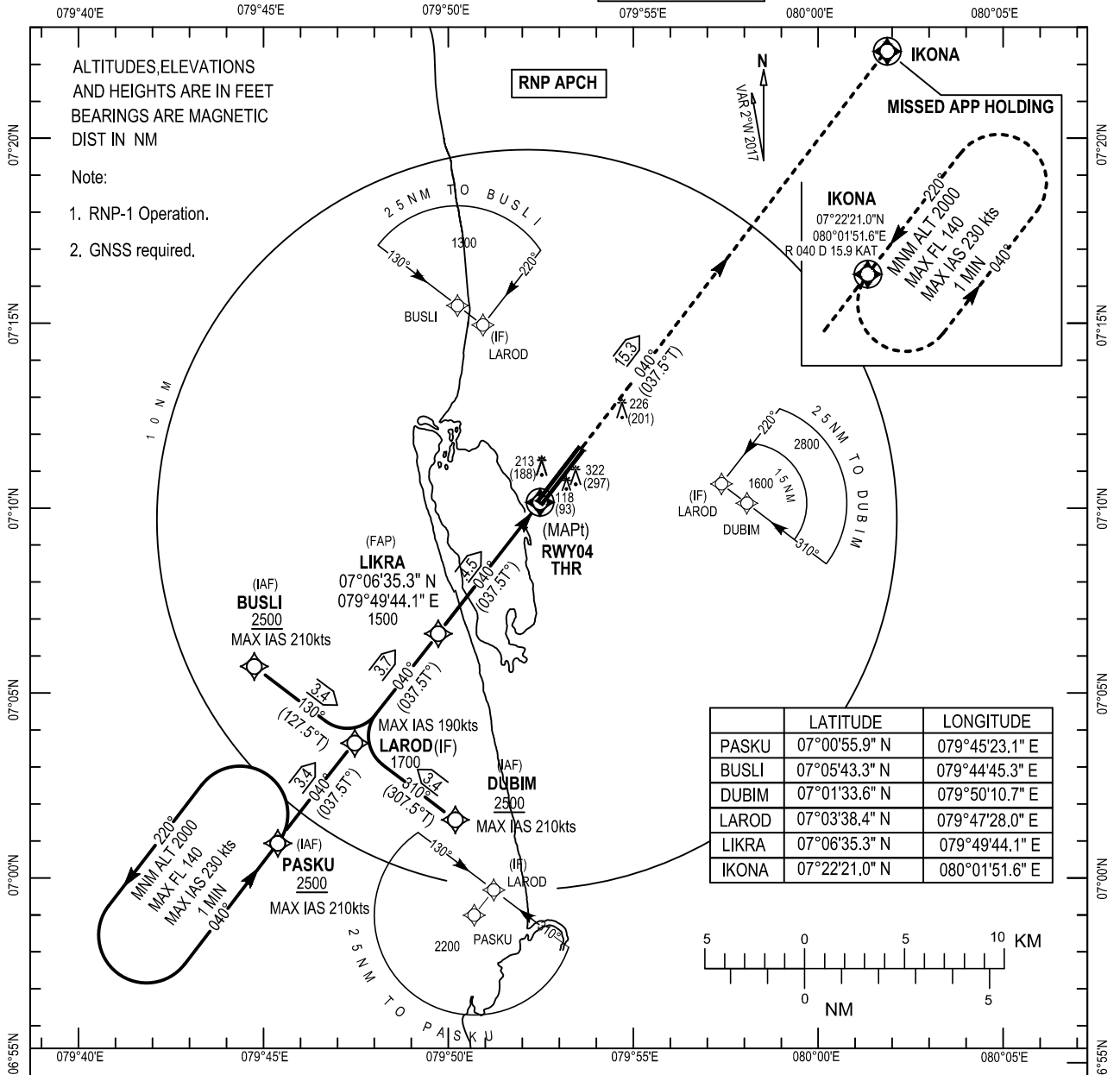


**INSTRUMENT APPROACH
CHART - ICAO**

AD ELEV 29 ft
HEIGHTS RELATED TO
THR RWY04 ELEVATION 25ft

ATIS	127.2
Colombo Director	132.4 120.9
Colombo Tower	118.7 123.8
SMC	121.9

**KATUNAYAKE/BANDARANAIKE INTL.
COLOMBO (VCBI)
RNP RWY04**



ALTITUDES, ELEVATIONS
AND HEIGHTS ARE IN FEET
BEARINGS ARE MAGNETIC
DIST IN NM

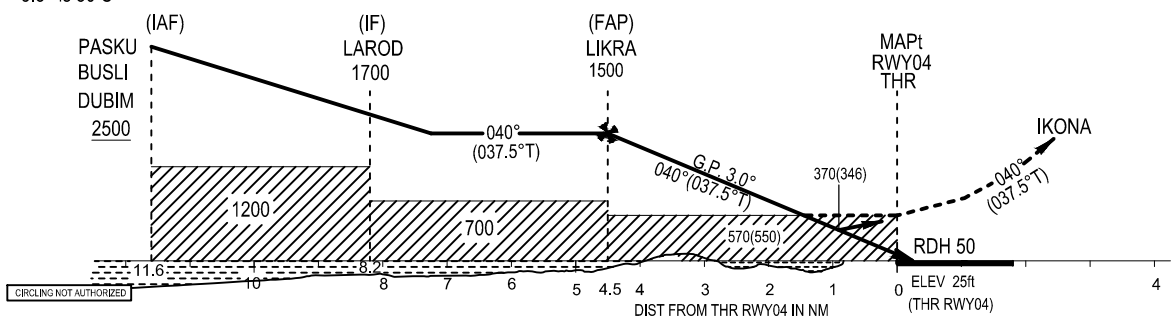
- Note:
1. RNP-1 Operation.
 2. GNSS required.

	LATITUDE	LONGITUDE
PASKU	07°00'55.9" N	079°45'23.1" E
BUSLI	07°05'43.3" N	079°44'45.3" E
DUBIM	07°01'33.6" N	079°50'10.7" E
LAROD	07°03'38.4" N	079°47'28.0" E
LIKRA	07°06'35.3" N	079°49'44.1" E
IKONA	07°22'21.0" N	080°01'51.6" E

Timing not authorized for defining the MAPt
Minimum temperature for Baro-VNAV Approaches 15 C
The temperature at which the effective VPA will exceed 3.5° is 50 C

Transition Altitude 11000
Transition Level FL130

MISSED APPROACH :
Climb to 2000ft on track 040° to IKONA and hold.



ACFT CATEGORY	A	B	C	D
LNAV/VNAV DA(DH)	310(286)	320(296)	340(316)	370(346)
LNAV MDA(MDH)	570(550)			

DIST MAPt(RWY04)	4	3	2	1
ALTITUDE	1348	1030	711	393

CODING TABLES FOR RNP APCH RWY 04

Segment	FIX	Path Term.	WP	FO	Course/Track ° Mag (°T)	Mag Var.	Distance (NM)	Turn Direction	Altitude (ft)	Speed (IAS/kt)	VPA/ RDH	NAV Specs
Transition	IAF	IF	DUBIM	-	310(307.5)	+2.0	3.4	-	+2500	210	-	RNP APCH
	IAF	IF	BUSLI	-	130(127.5)	+2.0	3.4	-	+2500	210	-	RNP APCH
	IAF	IF	PASKU	-	040(037.5)	+2.0	3.4	-	+2500	210	-	RNP APCH
	IF	TF	LAROD	-	040(037.5)	+2.0	3.7	-	1700	190	-	RNP APCH

Segment	FIX	Path Term.	WP	FO	Course/Track ° Mag (°T)	Mag Var.	Distance (NM)	Turn Direction	Altitude (ft)	Speed (IAS/kt)	VPA/ RDH	NAV Specs
Approach	IF	TF	LAROD	-	040(037.5)	+2.0	3.7	-	1700	190	-	RNP APCH
	FAP	TF	LIKRA	-	040(037.5)	+2.0	4.5	-	1500	185	-3.0/50	RNP APCH
	MAPT	TF	RWY04	Y	040(037.5)	+2.0	15.3	-	570	185	-	RNP APCH
	MAHF	CF	IKONA	Y	-	+2.0	-	-	2000	230	-	RNP APCH

Holding Description

Path descriptor	Fix identifier (Waypoint name)	Inbound course ° Mag (°T)	Timing (in minutes)	Turn direction	Minimum altitude	Maximum altitude	Speed limit	Magnetic variation	Navigation specification
Hold	IKONA	220(217.5)	1:0	L	2000	FL140	230	+2.0	RNAV 1
Hold	PASKU	040(037.5)	1:0	L	2000	FL140	230	+2.0	RNAV 1