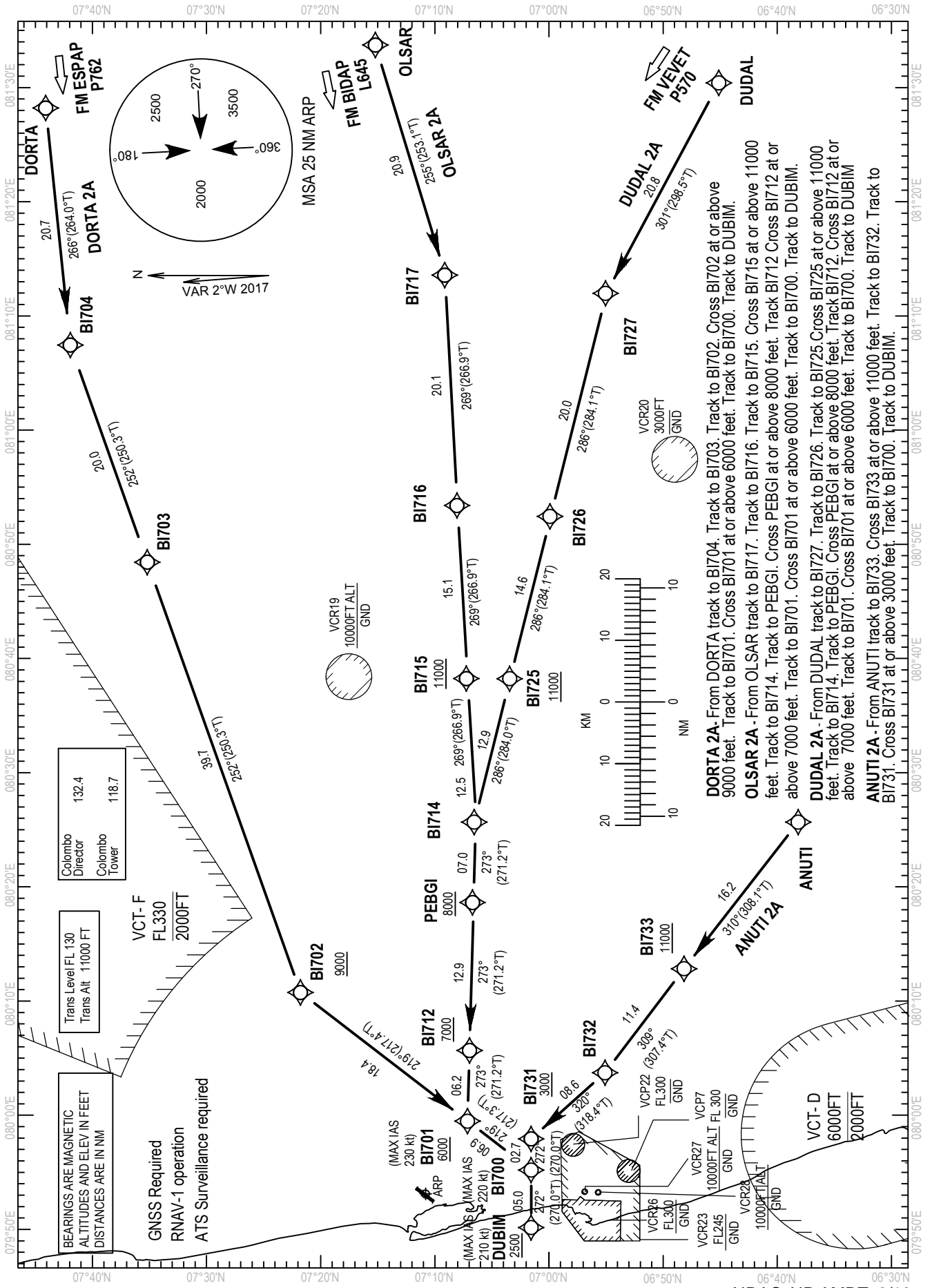


CODING TABLE DABAR 2A

Designator	No.	PT	WP	FO	Course °Mag (°T)	Distance (NM)	Turn	Level (ft)	Speed IAS (kt)	Nav. Spec.	Coordinates (WGS84)
DABAR 2A	001	IF	DABAR	-	-	-	-	--	-	RNAV1	10°00'00.0"N,080°04'54.0"E
	002	TF	BI777	-	184 (182.4)	89.4	-	-	-	RNAV1	08°30'15.7"N, 080°01'09.0"E
	003	TF	BI776	-	184 (182.4)	19.9	-	-	-	RNAV1	08°10'16.0"N, 080°00'18.5"E
	004	TF	BI775	-	184 (182.4)	30.0	-	-	-	RNAV1	07°40'10.3"N, 079°59'02.7"E
	005	TF	BI774	-	184 (182.4)	10.0	-	-	-	RNAV1	07°30'09.0"N, 079°58'37.5"E
	006	TF	BI941	-	220 (217.8)	08.8	-	+8000	-	RNAV1	07°23'12.2"N, 079°53'11.1"E
	007	TF	BI762	-	219 (217.4)	11.8	-	+5000	-	RNAV1	07°13'47.3"N, 079°45'56.2"E
	008	TF	BI761	-	219 (217.4)	04.0	-	-	-	RNAV1	07°10'37.1"N, 079°43'29.8"E
	009	TF	BUSLI	-	168 (165.7)	05.0	-	+2500	210	RNAV1	07°05'43.3"N, 079°44'45.3"E

CODING TABLE IDIBI 2A

Designator	No.	PT	WP	FO	Course °Mag (°T)	Distance (NM)	Turn	Level (ft)	Speed IAS (kt)	Nav. Spec.	Coordinates (WGS84)
IDIBI 2A	001	IF	IDIBI	.	-	-	-	-	-	RNAV1	08°44'18.0"N, 079°21'54.0"E
	002	TF	BI766	-	149 (147.2)	18.8	-	-	-	RNAV1	08°28'29.8"N, 079°32'12.2"E
	003	TF	BI765	-	164 (162.3)	20.0	-	-	-	RNAV1	08°09'20.0"N, 079°38'22.4"E
	004	TF	BI764	-	164 (162.3)	30.1	-	-	-	RNAV1	07°40'30.9"N, 079°47'38.0"E
	005	TF	BI941	-	164 (162.4)	18.1	-	+8000	-	RNAV1	07°23'12.2"N, 079°53'11.1"E
	006	TF	BI762	-	219 (217.4)	11.8	-	+5000	-	RNAV1	07°13'47.3"N, 079°45'56.2"E
	007	TF	BI761	-	219 (217.4)	04.0	-	-	-	RNAV1	07°10'37.1"N, 079°43'29.8"E
	008	TF	BUSLI	-	168 (165.7)	05.0	-	+2500	210	RNAV1	07°05'43.3"N, 079°44'45.3"E



CODING TABLE DORTA 2A

Designator	No.	PT	WP	FO	Course °Mag (°T)	Distance (NM)	Turn	Level (ft)	Speed IAS (kt)	Nav. Spec.	Coordinates (WGS84)
DORTA 2A	001	IF	DORTA	-	-	-	-	-	-	RNAV1	07°44'05.0"N, 081°28'13.0"E
	002	TF	BI704	-	266 (264.0)	20.7	-	-	-	RNAV1	07°41'55.7"N, 081°07'27.2"E
	003	TF	BI703	-	252 (250.3)	20.0	-	-	-	RNAV1	07°35'11.0"N, 080°48'26.3"E
	004	TF	BI702	-	252 (250.3)	39.7	-	+9000	-	RNAV1	07°21'45.9"N, 080°10'45.7"E
	005	TF	BI701	-	219 (217.4)	18.4	-	+6000	230	RNAV1	07°07'04.7"N, 079°59'26.1"E
	006	TF	BI700	-	219 (217.3)	06.9	-	-	220	RNAV1	07°01'33.6"N, 079°55'12.4"E
	007	TF	DUBIM	-	272 (270.0)	05.0	-	+2500	210	RNAV1	07°01'33.6"N, 079°50'10.7"E

CODING TABLE OLSAR 2A

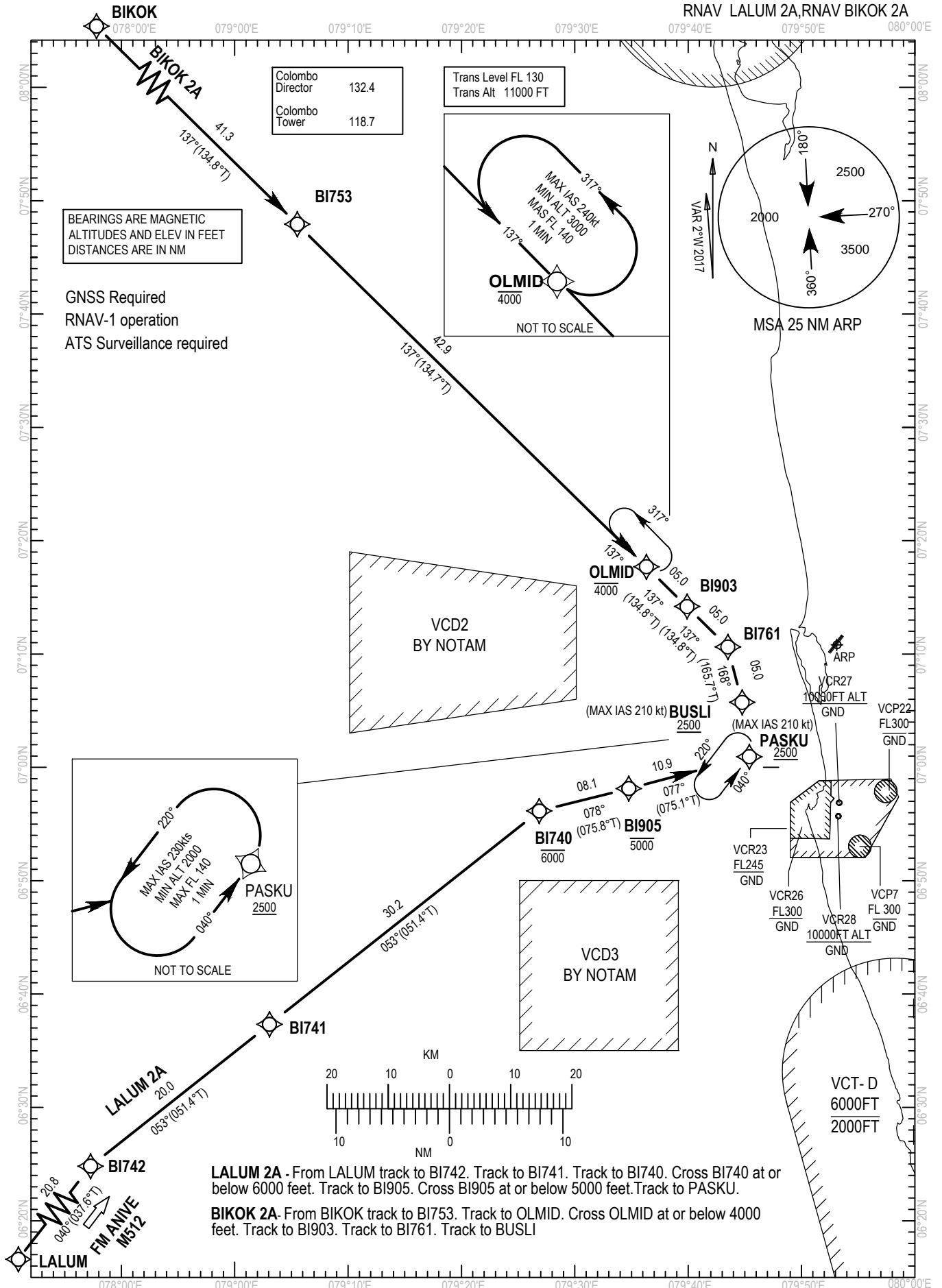
Designator	No.	PT	WP	FO	Course °Mag (°T)	Distance (NM)	Turn	Level (ft)	Speed IAS (kt)	Nav. Spec.	Coordinates (WGS84)
OLSAR 2A	001	IF	OLSAR	.	-	-	-	-	-	RNAV1	07°15'12.0"N, 081°33'44.0"E
	002	TF	BI717	-	255 (253.1)	20.9	-	-	-	RNAV1	07°09'07.5"N, 081°13'34.7"E
	003	TF	BI716	-	269 (266.9)	20.1	-	-	-	RNAV1	07°08'02.9"N, 080°53'24.5"E
	004	TF	BI715	-	269 (266.9)	15.1	-	+11000	-	RNAV1	07°07'13.9"N, 080°38'14.9"E
	005	TF	BI714	-	269 (266.9)	12.5	-	-	-	RNAV1	07°06'32.8"N, 080°25'40.7"E
	006	TF	PEBGI	-	273 (271.2)	07.0	-	+8000	-	RNAV1	07°06'41.5"N, 080°18'38.3"E
	007	TF	BI712	-	273 (271.2)	12.9	-	+7000	-	RNAV1	07°06'57.2"N, 080°05'41.0"E
	008	TF	BI701	-	273 (271.2)	06.2	-	+6000	230	RNAV1	07°07'04.7"N, 079°59'26.1"E
	009	TF	BI700	-	219 (217.3)	06.9	-	-	220	RNAV1	07°01'33.6"N, 079°55'12.4"E
	010	TF	DUBIM	-	272 (270.0)	05.0	-	+2500	210	RNAV1	07°01'33.6"N, 079°50'10.7"E

CODING TABLE DUDAL 2A

Designator	No.	PT	WP	FO	Course °Mag (°T)	Distance (NM)	Turn	Level (ft)	Speed IAS (kt)	Nav. Spec.	Coordinates (WGS84)
DUDAL 2A	001	IF	DUDAL	.	-	-	-	-	-	RNAV1	06°45'07.0"N, 081°30'25.0"E
	002	TF	BI727	-	301 (298.5)	20.8	-	-	-	RNAV1	06°55'02.6"N, 081°11'59.4"E
	003	TF	BI726	-	286 (284.1)	20.0	-	-	-	RNAV1	06°59'54.3"N, 080°52'27.3"E
	004	TF	BI725	-	286 (284.1)	14.6	-	+11000	-	RNAV1	07°03'26.1"N, 080°38'14.3"E
	005	TF	BI714	-	286 (284.0)	12.9	-	-	-	RNAV1	07°06'32.8"N, 080°25'40.7"E
	006	TF	PEBGI	-	273 (271.2)	07.0	-	+8000	-	RNAV1	07°06'41.5"N, 080°18'38.3"E
	007	TF	BI712	-	273 (271.2)	12.9	-	+7000	-	RNAV1	07°06'57.2"N, 080°05'41.0"E
	008	TF	BI701	-	273 (271.2)	06.2	-	+6000	230	RNAV1	07°07'04.7"N, 079°59'26.1"E
	009	TF	BI700	-	219 (217.3)	06.9	-	-	220	RNAV1	07°01'33.6"N, 079°55'12.4"E
	010	TF	DUBIM	-	272 (270.0)	05.0	-	+2500	210	RNAV1	07°01'33.6"N, 079°50'10.7"E

CODING TABLE ANUTI 2A

Designator	No.	PT	WP	FO	Course °Mag (°T)	Distance (NM)	Turn	Level (ft)	Speed IAS (kt)	Nav. Spec.	Coordinates (WGS84)
ANUTI 2A	001	IF	ANUTI	-	-	-	-	-	-	RNAV1	06°38'09.7"N, 080°25'40.7"E
	002	TF	BI733	-	310 (308.1)	16.2	-	+11000	-	RNAV1	06°48'09.3"N, 080°12'50.4"E
	003	TF	BI732	-	309 (307.4)	11.4	-	-	-	RNAV1	06°55'04.7"N, 080°03'43.9"E
	004	TF	BI731	-	320 (318.4)	08.6	-	+3000	-	RNAV1	07°01'33.5"N, 079°57'56.3"E
	005	TF	BI700	-	272 (270.0)	02.7	-	-	220	RNAV1	07°01'33.6"N, 079°55'12.4"E
	006	TF	DUBIM	-	272 (270.0)	05.0	-	+2500	210	RNAV1	07°01'33.6"N, 079°50'10.7"E



CODING TABLE LALUM 2A

Designator	No.	PT	WP	FO	Course °Mag (°T)	Distance (NM)	Turn	Level (ft)	Speed IAS (kt)	Nav. Spec.	Coordinates (WGS84)
LALUM 2A	001	IF	LALUM	-	-	-	-	-	-	RNAV1	06°08'17.0"N, 078°34'28.0"E
	002	TF	BI742	-	040 (037.6)	20.8	-	-	-	RNAV1	06°24'48.4"N, 078°47'16.5"E
	003	TF	BI741	-	053 (051.4)	20.0	-	-	-	RNAV1	06°37'19.1"N, 079°03'03.5"E
	004	TF	BI740	-	053 (051.4)	30.2	-	-6000	-	RNAV1	06°56'08.6"N, 079°26'51.2"E
	005	TF	BI905	-	078 (075.8)	08.1	-	-5000	-	RNAV1	06°58'07.3"N, 079°34'44.9"E
	006	TF	PASKU	-	077 (075.1)	10.9	-	+2500	210	RNAV1	07°00'55.9"N, 079°45'23.1"E

CODING TABLE BIKOK 2A

Designator	No.	PT	WP	FO	Course °Mag (°T)	Distance (NM)	Turn	Level (ft)	Speed IAS (kt)	Nav. Spec.	Coordinates (WGS84)
BIKOK 2A	001	IF	BIKOK	-	-	-	-	-	-	RNAV1	08°17'06.0"N, 078°35'55.0"E
	002	TF	BI753	-	137 (134.8)	41.3	-	-	-	RNAV1	07°47'55.1"N, 079°05'30.7"E
	003	TF	OLMID	-	137 (134.7)	42.9	-	-4000	-	RNAV1	07°17'41.7"N, 079°36'18.2"E
	004	TF	BI903	-	137 (134.8)	05.0	-	-	-	RNAV1	07°14'10.2"N, 079°39'53.2"E
	005	TF	BI761	-	137 (134.8)	05.0	-	-	-	RNAV1	07°10'37.1"N, 079°43'29.8"E
	006	TF	BUSLI	-	168 (165.7)	05.0	-	+2500	210	RNAV1	07°05'43.3"N, 079°44'45.3"E