

BEARINGS ARE MAGNETIC  
ALTITUDES AND ELEV IN FEET  
DISTANCES ARE IN NM

Trans Level FL 130  
Trans Alt 11000 FT

Colombo Director	132.4
Colombo Tower	118.7

GNSS Required  
RNAV-1 operation  
ATS Surveillance required

**Note:**  
No turns allowed before Departure  
End of Runway(DER)

**Minimum Climb Gradient :**  
DEMON 1D  
After take off upto 5000ft : 5.3%

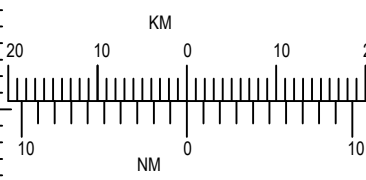
ATETA 1D  
After take off upto FL130 : 6.0%

NOTE 1 - SID ATETA 1D AVBL only for ACFT proceeding to Tiruchirappalli Airport (VOTR) and/or ACFT route via TTR to other destinations.

NOTE 2 - ACFT intend to use SID ATETA 1D shall Flight Plan via ATETA - T4 - TTR.

**ATETA 1D** - RWY 22 climb on track 220° to 500 Feet and after crossing DER turn right. Track direct to BI611. Track to BI622. Cross BI622 at or above 5000 feet. Track to SUMOX. Track to BI624. Track to BI645. Cross BI645 at or above FL130. Track to BI646. Track to BI647. Track to ATETA.

**DEMON 1D** - RWY 22 climb on track 220° to 500 Feet and after crossing DER turn right. Track direct to BI611. Track to BI622. Cross BI622 at or above 5000 feet. Track to SUMOX. Track to BI624. Track to BI625. Track to BI626. Track to BI627. Track to DEMON.



VCD2  
BY NOTAM

BI611  
MAX IAS 240Kt  
Bank Angle 20°

**CODING TABLE-ATETA 1D**

Designator	No.	PT	WP	FO	Course °Mag (°T)	Distance (NM)	PDG (%)	Turn	Level (ft)	Speed IAS (kt)	Nav. Spec.	Coordinates (WGS84)
ATETA 1D	001	CA	-	-	220 (217.5)	-	6.0	-	+500	-	RNAV1	-
	002	DF	BI611	-	-	-	6.0	R	-	240	RNAV1	07°10'48.7"N, 079°46'37.9"E
	003	TF	BI622	-	039 (037.4)	08.3	6.0	-	+5000	-	RNAV1	07°17'26.7"N, 079°51'44.2"E
	004	TF	SUMOX	-	039 (037.4)	05.0	6.0	-	-	-	RNAV1	07°21'25.7"N, 079°54'48.2"E
	005	TF	BI624	-	004 (001.5)	05.9	6.0	-	-	-	RNAV1	07°27'20.7"N, 079°54'57.6"E
	006	TF	BI645	-	004 (001.5)	10.3	6.0	-	+F130	-	RNAV1	07°37'43.1"N, 079°55'14.1"E
	007	TF	BI646	-	004 (001.5)	14.0	3.3	-	-	-	RNAV1	07°51'47.0"N, 079°55'37.0"E
	008	TF	BI647	-	351 (349.2)	19.2	3.3	-	-	-	RNAV1	08°10'41.3"N, 079°51'58.0"E
	009	TF	ATETA	-	351 (349.3)	69.3	3.3	-	-	-	RNAV1	09°19'06.0"N, 079°38'55.0"E

**Radio Communication Failure Procedure**

- A. Set transponder to Mode A/C, Code 7600
- B. Continue on SID to cruising level.
- C. If RTB
  - I. If ACFT before SUMOX - continue on SID to SUMOX . Join ILS Z RWY22 App.
  - II. If ACFT has passed SUMOX - join STAR IDIBI 1A. Join ILS Z RWY22 App.
  - III. a.) If landing – Land on RWY22  
b.) If holding/fuel dumping - From KADIR track to PASKU hold at 6000 feet minimum. For landing- track to BI453 & join STAR LALUM 1A. Join ILS Z RWY22 App. to land.

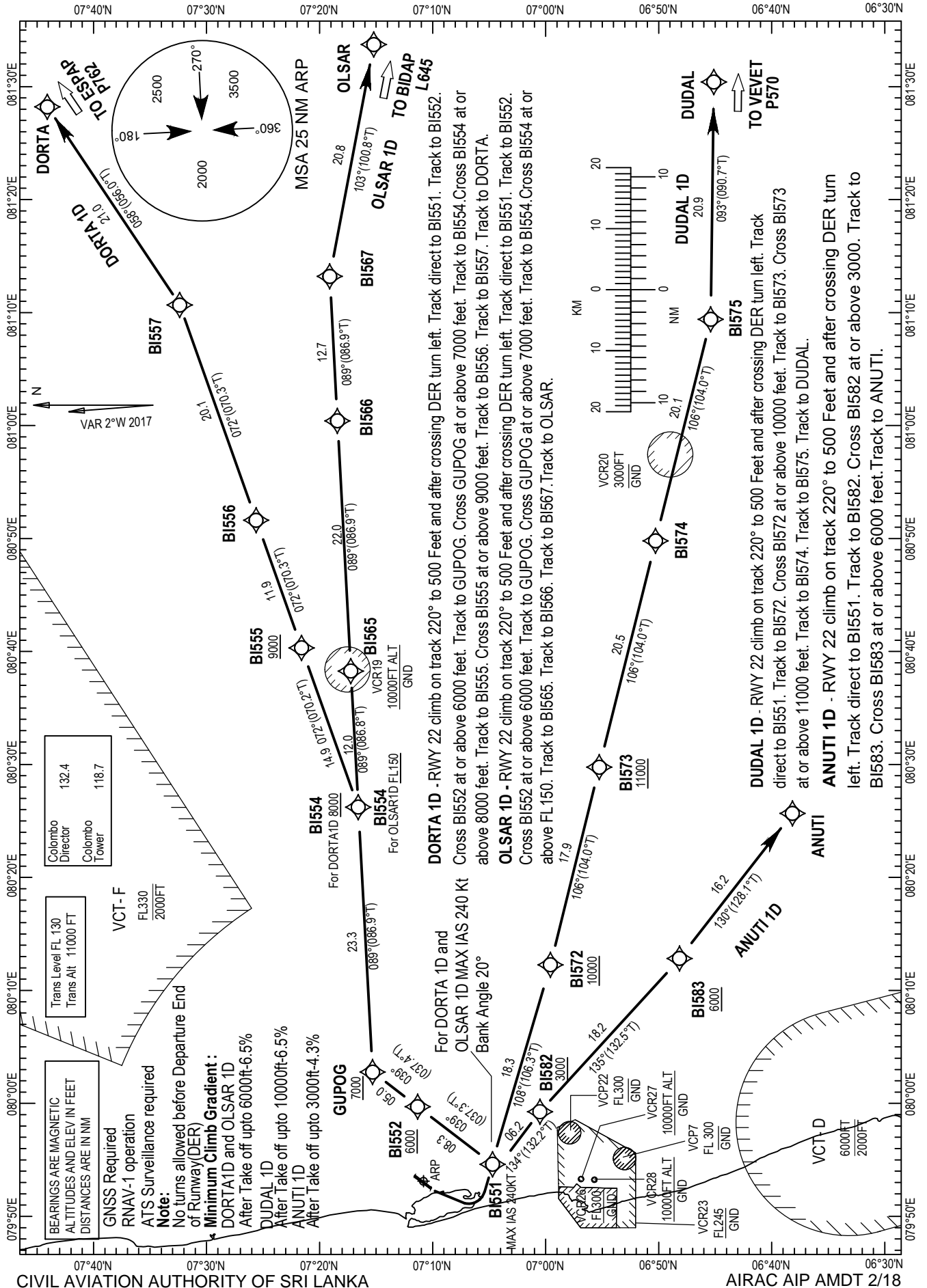
**CODING TABLE-DEMON 1D**

Designator	No.	PT	WP	FO	Course °Mag (°T)	Distance (NM)	PDG (%)	Turn	Level (ft)	Speed IAS (kt)	Nav. Spec.	Coordinates (WGS84)
DEMON 1D	001	CA	-	-	220 (217.5)	-	5.3	-	+500	-	RNAV1	-
	002	DF	BI611	-	-	-	5.3	R	-	240	RNAV1	07°10'48.7"N, 079°46'37.9"E
	003	TF	BI622	-	039 (037.4)	08.3	5.3	-	+5000	-	RNAV1	07°17'26.7"N, 079°51'44.2"E
	004	TF	SUMOX	-	039 (037.4)	05.0	3.3	-	-	-	RNAV1	07°21'25.7"N, 079°54'48.2"E
	005	TF	BI624	-	004 (001.5)	05.9	3.3	-	-	-	RNAV1	07°27'20.7"N, 079°54'57.6"E
	006	TF	BI625	-	328 (326.0)	10.3	3.3	-	-	-	RNAV1	07°35'56.3"N, 079°49'06.9"E
	007	TF	BI626	-	320 (317.7)	24.4	3.3	-	-	-	RNAV1	07°53'58.3"N, 079°32'31.6"E
	008	TF	BI627	-	320 (317.6)	12.6	3.3	-	-	-	RNAV1	08°03'16.3"N, 079°23'57.7"E
	009	TF	DEMON	-	320 (318.1)	40.4	3.3	-	-	-	RNAV1	08°33'25.0"N, 078°56'38.0"E

**Radio Communication Failure Procedure**

- A. Set transponder to Mode A/C, Code 7600
- B. Continue on SID to cruising level.
- C. If RTB
  - I. If ACFT before SUMOX - continue on SID to SUMOX . Join ILS Z RWY22 App.
  - II. If ACFT has passed SUMOX – join STAR BIKOK 1A. Join ILS Z RWY22 App.
  - III. a.)If landing – Land on RWY22  
b.)If holding/fuel dumping - From KADIR track to PASKU hold at 6000 feet minimum.  
For landing- track to BI453 & join STAR LALUM 1A. Join ILS Z RWY22 App. to land.

RNAV DORTA 1D, RNAV OLSAR 1D, RNAV DUDAL 1D, RNAV ANUTI 1D



**CODING TABLE DORTA 1D**

Designator	No.	PT	WP	FO	Course °Mag (°T)	Distance (NM)	PDG (%)	Turn	Level (ft)	Speed IAS (kt)	Nav. Spec.	Coordinates (WGS84)
DORTA 1D	001	CA	-	-	220 (217.5)	-	6.5	-	+500	-	RNAV1	-
	002	DF	BI551	-	-	-	6.5	L	-	240	RNAV1	07°04'41.4"N, 079°54'37.2"E
	003	TF	BI552	-	039 (037.3)	08.3	6.5	-	+6000	-	RNAV1	07°11'19.3"N, 079°59'43.1"E
	004	TF	GUPOG	-	039 (037.4)	05.0	3.3	-	+7000	-	RNAV1	07°15'18.3"N, 080°02'47.0"E
	005	TF	BI554	-	089 (086.9)	23.3	3.3	-	+8000	-	RNAV1	07°16'34.4"N, 080°26'14.0"E
	006	TF	BI555	-	072 (070.2)	14.9	3.3	-	+9000	-	RNAV1	07°21'35.5"N, 080°40'19.5"E
	007	TF	BI556	-	072 (070.3)	11.9	3.3	-	-	-	RNAV1	07°25'36.6"N, 080°51'37.5"E
	008	TF	BI557	-	072 (070.3)	20.1	3.3	-	-	-	RNAV1	07°32'22.2"N, 081°10'40.7"E
	009	TF	DORTA	-	058 (056.0)	21.0	3.3	-	-	-	RNAV1	07°44'05.0"N, 081°28'13.0"E

**Radio Communication Failure Procedure**

- A. Set transponder to Mode A/C, Code 7600
- B. Continue on SID to cruising level.
- C. If RTB
  - I. If ACFT is before GUPOG - continue on SID to GUPOG. Join ILS Z RWY22 App.
  - II. If ACFT has passed GUPOG – join STAR DORTA 1A. Join ILS Z RWY22 App.
  - III. a.) If landing – Land on RWY22  
b.) If holding/fuel dumping – From KADIR track to PASKU hold at 6000 feet minimum. For landing - track to BI453 & Join LALUM 1A. Join ILS Z RWY22

**CODING TABLE OLSAR 1D**

Designator	No.	PT	WP	FO	Course °Mag (°T)	Distance (NM)	PDG (%)	Turn	Level (ft)	Speed IAS (kt)	Nav. Spec.	Coordinates (WGS84)
OLSAR 1D	001	CA	-	-	220 (217.5)	-	6.5	-	+500	-	RNAV1	-
	002	DF	BI551	-	-	-	6.5	L	-	240	RNAV1	07°04'41.4"N, 079°54'37.2"E
	003	TF	BI552	-	039 (037.3)	08.3	6.5	-	+6000	-	RNAV1	07°11'19.3"N, 079°59'43.1"E
	004	TF	GUPOG	-	039 (037.4)	05.0	6.5	-	+7000	-	RNAV1	07°15'18.3"N, 080°02'47.0"E
	005	TF	BI554	-	089 (086.9)	23.3	5.7	-	+F150	-	RNAV1	07°16'34.4"N, 080°26'14.0"E
	006	TF	BI565	-	089 (086.8)	12.0	3.3	-	-	-	RNAV1	07°17'13.8"N, 080°38'16.5"E
	007	TF	BI566	-	089 (086.9)	22.0	3.3	-	-	-	RNAV1	07°18'25.2"N, 081°00'25.4"E
	008	TF	BI567	-	089 (086.9)	12.7	3.3	-	-	-	RNAV1	07°19'06.0"N, 081°13'12.8"E
	009	TF	OLSAR	-	103 (100.8)	20.8	3.3	-	-	-	RNAV1	07°15'12.0"N, 081°33'44.0"E

**Radio Communication Failure Procedure**

- A. Set transponder to Mode A/C, Code 7600
- B. Continue on SID to cruising level.
- C. If RTB
  - I. If ACFT before GUPOG - continue on SID to GUPOG. Join ILS Z RWY22 App.
  - II. If ACFT has passed GUPOG – join STAR OLSAR 1A. Join ILS Z RWY22 App.
  - III. a.) If landing – Land on RWY22  
b.) If holding/fuel dumping – From KADIR track to PASKU hold at 6000 feet minimum. For landing - track to BI453 & Join LALUM 1A. Join ILS Z RWY22 to land.

**CODING TABLE DUDAL 1D**

Designator	No.	PT	WP	FO	Course °Mag (°T)	Distance (NM)	PDG (%)	Turn	Level (ft)	Speed IAS (kt)	Nav. Spec.	Coordinates (WGS84)
DUDAL 1D	001	CA	-	-	220 (217.5)	-	6.5	-	+500	-	RNAV1	-
	002	DF	BI551	-	-	-	6.5	L	-	240	RNAV1	07°04'41.4"N, 079°54'37.2"E
	003	TF	BI572	-	108 (106.3)	18.3	6.5	-	+10000	-	RNAV1	06°59'34.4"N, 080°12'16.5"E
	004	TF	BI573	-	106 (104.0)	17.9	3.3	-	+11000	-	RNAV1	06°55'14.8"N, 080°29'46.1"E
	005	TF	BI574	-	106 (104.0)	20.5	3.3	-	-	-	RNAV1	06°50'16.5"N, 080°49'48.0"E
	006	TF	BI575	-	106 (104.0)	20.1	3.3	-	-	-	RNAV1	06°45'23.7"N, 081°09'24.7"E
	007	TF	DUDAL	-	093 (090.7)	20.9	3.3	-	-	-	RNAV1	06°45'07.0"N, 081°30'25.0"E

**Radio Communication Failure Procedure**

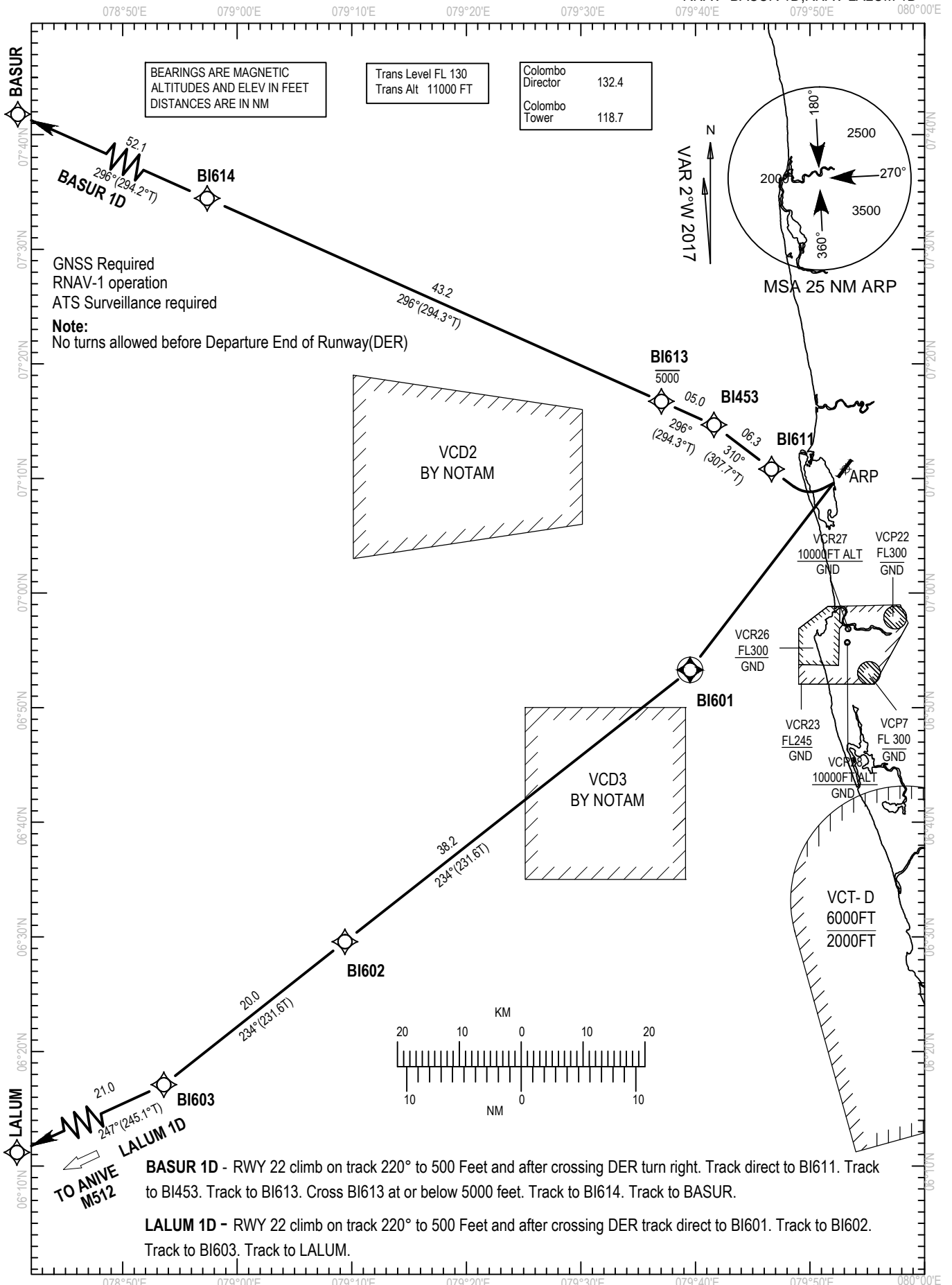
- A. Set transponder to Mode A/C, Code 7600
- B. Continue on SID to cruising level.
- C. If RTB
  - I. Join STAR DUDAL 1A. Join ILS Z RWY22 App.
  - II. a.) If landing – Land on RWY22  
b.) If holding/fuel dumping – From KADIR track to PASKU. Hold at 6000 feet minimum.  
For landing - track to BI453 & join STAR LALUM 1A. Join ILS Z RWY22 App. to land.

**CODING TABLE ANUTI 1D**

Designator	No.	PT	WP	FO	Course °Mag (°T)	Distance (NM)	PDG (%)	Turn	Level (ft)	Speed IAS (kt)	Nav. Spec.	Coordinates (WGS84)
ANUTI 1D	001	CA	-	-	220(217.5)	-	4.3	-	+500	-	RNAV1	-
	002	DF	BI551	-	-	-	4.3	L	-	240	RNAV1	07°04'41.4"N, 079°54'37.2"E
	003	TF	BI582	-	134 (132.2)	6.2	4.3	-	+3000	-	RNAV1	07°00'29.9"N, 079°59'16.5"E
	004	TF	BI583	-	135 (132.5)	18.2	3.3	-	+6000	-	RNAV1	06°48'09.2"N, 080°12'50.2"E
	005	TF	ANUTI	-	130 (128.1)	16.2	3.3	-	-	-	RNAV1	06°38'09.7"N, 080°25'40.7"E

**Radio Communication Failure Procedure**

- A. Set transponder to Mode A/C, Code 7600
- B. Continue on SID to cruising level.
- C. If RTB
  - I. Join STAR RUPOK 1A. Join ILS Z RWY22 App.
  - II. a.) If landing – Land on RWY22  
b.) If holding/fuel dumping – From KADIR track to PASKU. Hold at 6000 feet minimum.  
For landing - track to BI453 & join STAR LALUM 1A. Join ILS Z RWY22 App. to land.



**CODING TABLE LALUM 1D**

Designator	No.	PT	WP	FO	Course °Mag (°T)	Distance (NM)	PDG (%)	Turn	Level (ft)	Speed IAS (kt)	Nav. Spec.	Coordinates (WGS84)
LALUM 1D	001	CA	-	-	220 (217.5)	-	3.3	-	+500	-	RNAV1	-
	002	DF	BI601	Y	-	-	3.3	-	-	-	RNAV1	06°53'17.2"N, 079°39'31.3"E
	003	TF	BI602	-	234 (231.6)	38.2	3.3	-	-	-	RNAV1	06°29'34.1"N, 079°09'23.4"E
	004	TF	BI603	-	234 (231.6)	20.0	3.3	-	-	-	RNAV1	06°17'05.8"N, 078°53'34.9"E
	005	TF	LALUM	-	247 (245.1)	21.0	3.3	-	-	-	RNAV1	06°08'17.0"N, 078°34'28.0"E

**Radio Communication Failure Procedure**

- A. Set transponder to Mode A/C, Code 7600
- B. Continue on SID to cruising level.
- C. If RTB
  - I. Join STAR LALUM 1A. Join ILS Z RWY22 App
  - II. a.) If landing – Land on RWY22  
b.) If holding/fuel dumping – From KADIR track to PASKU hold at 6000 feet minimum.  
For landing- track to BI453 & join STAR LALUM 1A. Join ILS Z RWY22 App. to land.

**CODING TABLE BASUR 1D**

Designator	No.	PT	WP	FO	Course °Mag (°T)	Distance (NM)	PDG (%)	Turn	Level (ft)	Speed IAS (kt)	Nav. Spec.	Coordinates (WGS84)
BASUR 1D	001	CA	-	-	220 (217.5)	-	3.3	-	+500	-	RNAV1	-
	002	DF	BI611	-	-	-	3.3	R	-	-	RNAV1	07°10'48.7"N, 079°46'37.9"E
	003	TF	BI453	-	310 (307.7)	06.3	3.3	-	-	-	RNAV1	07°14'40.0"N, 079°41'36.3"E
	004	TF	BI613	-	296 (294.3)	05.0	3.3	-	-5000	-	RNAV1	07°16'43.3"N, 079°37'00.8"E
	005	TF	BI614	-	296 (294.3)	43.2	3.3	-	-	-	RNAV1	07°34'26.1"N, 078°57'21.8"E
	006	TF	BASUR	-	296 (294.2)	52.1	3.3	-	-	-	RNAV1	07°55'43.0"N, 078°09'26.0"E

**Radio Communication Failure Procedure**

- A. Set transponder to Mode A/C, Code 7600
- B. Continue on SID to cruising level.
- C. If RTB
  - I. If ACFT before BI453 - continue on SID to BI453. Join STAR LALUM 1A. Join ILS Z RWY22 App.
  - II. If ACFT has passed BI453 – join STAR BIKOK 1A. Join ILS Z RWY22 App.
  - III. a.) If landing – Land on RWY22  
b.) If holding/fuel dumping – From KADIR track to PASKU hold at 6000 feet minimum.  
For landing- track to BI453 & join STAR LALUM 1A. Join ILS Z RWY22 App. to land.