

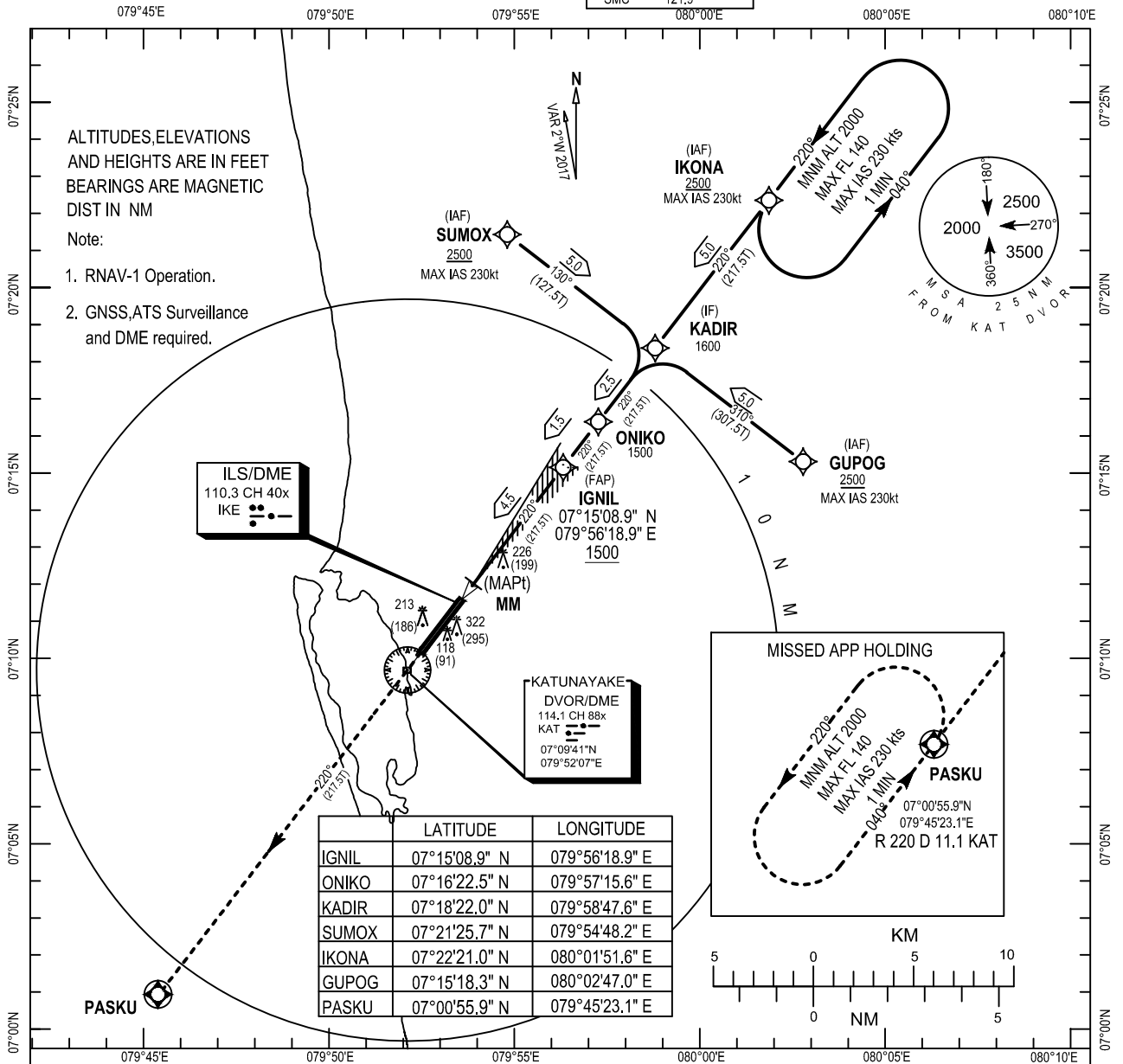
**INSTRUMENT APPROACH
CHART - ICAO**

AD ELEV 29 ft
HEIGHTS RELATED TO
THR RWY22 ELEVATION 27ft

ATIS	127.2
Colombo Director	132.4 120.9
Colombo Tower	118.7 123.8
SMC	121.9

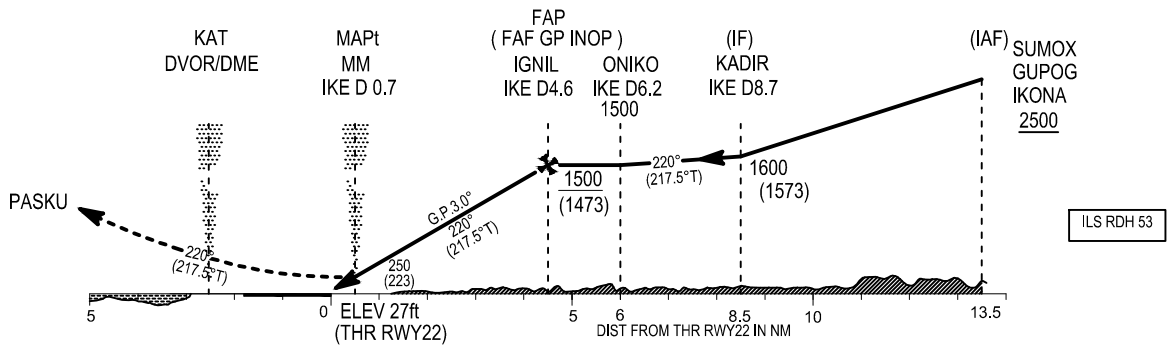
**KATUNAYAKE/BANDARANAIKE INTL.
COLOMBO (VCBI)**

ILS Z or LOC RWY 22



MISSED APPROACH :
Climb Straight head to 2000ft. Track direct to PASKU and hold.

Transition Altitude 11000
Transition Level FL130
ILS DME CO-LOCATED WITH G.P



OCA/OCH	A	B	C	D	Speed	kt	90	120	150	180
Straight-in Cat 1	230(203)	230(203)	240(213)	250(223)	FAP-MAPt 3.9 NM	min:sec	2:37	1:57	1:34	1:18
Approach GP INOP	490(463)				Rate of Descent FAF-MAPt 3°(5.27%)	ft/min	470	630	790	950



CODING TABLES FOR ILS Z or LOC RWY 22

Designator	Serial No.	Path Term.	WP	FO	Course/Track ° Mag (°T)	Distance (NM)	Turn Direction	Altitude (ft)	Speed (IAS/kt)	NAV. Specs
ILS Z RWY 22 (via SUMOX) (Right-in)	01	IF	IAF(SUMOX)	-	130 (127.5)	-	-	+2500	230	RNAV1
	02	TF	IF (KADIR)	-	220 (217.5)	5.0	-	1600	220	RNAV1
	03	TF	WP (ONIKO)	-	220 (217.5)	2.5	-	1500	-	RNAV1
	04	TF	FAP (IGNIL)	-	220 (217.5)	1.5	-	+1500	185	RNAV1

Designator	Serial No.	Path Term.	WP	FO	Course/Track ° Mag (°T)	Distance (NM)	Turn Direction	Altitude (ft)	Speed (IAS/kt)	NAV. Specs
ILS Z RWY 22 (via IKONA) (Straight-in)	01	IF	IAF(IKONA)	-	220 (217.5)	-	-	+2500	230	RNAV1
	02	TF	IF (KADIR)	-	220 (217.5)	5.0	-	1600	220	RNAV1
	03	TF	WP (ONIKO)	-	220 (217.5)	2.5	-	1500	-	RNAV1
	04	TF	FAP (IGNIL)	-	220 (217.5)	1.5	-	+1500	185	RNAV1

Designator	Serial No.	Path Term.	WP	FO	Course/Track ° Mag (°T)	Distance (NM)	Turn Direction	Altitude (ft)	Speed (IAS/kt)	NAV. Specs
ILS Z RWY 22 (via GUPOG) (Left-in)	01	IF	IAF(GUPOG)	-	310 (127.5)	-	-	+2500	230	RNAV1
	02	TF	IF (KADIR)	-	220 (217.5)	5.0	-	1600	220	RNAV1
	03	TF	WP (ONIKO)	-	220 (217.5)	2.5	-	1500	-	RNAV1
	04	TF	FAP (IGNIL)	-	220 (217.5)	1.5	-	+1500	185	RNAV1

Holding Description

Path descriptor or	Fix identifier (Waypoint name)	Inbound course ° Mag (°T)	Timing (in minutes)	Turn direction	Minimum altitude	Maximum altitude	Speed limit	Magnetic variation	Navigation specification
Hold	IKONA	220(217.5)	1:0	L	2000	FL140	230	+2.0	RNAV 1
Hold	PASKU	040(037.5)	1:0	L	2000	FL140	230	+2.0	RNAV 1