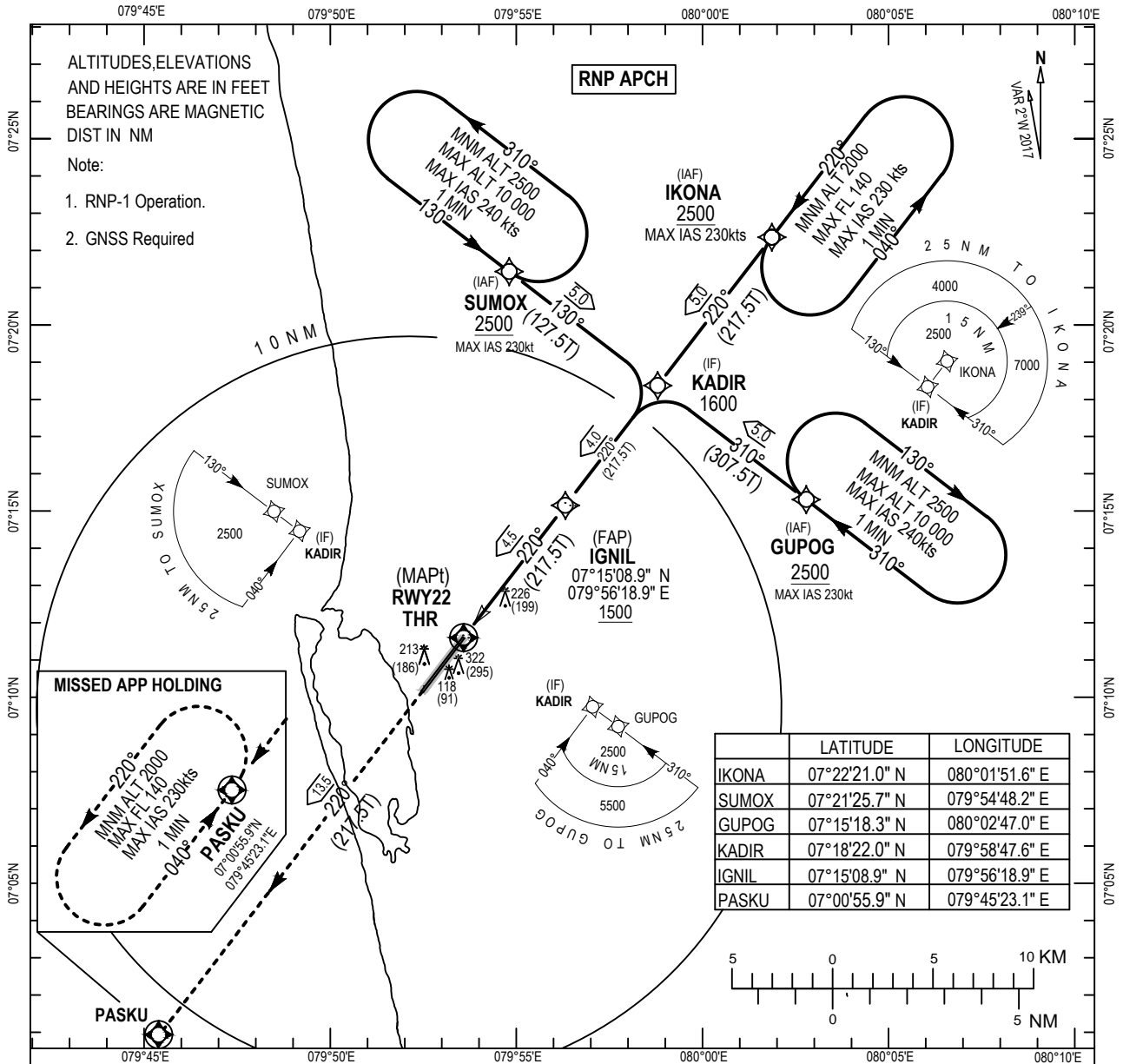


INSTRUMENT APPROACH  
CHART - ICAO

AD ELEV 29 ft  
HEIGHTS RELATED TO  
THR RWY22 ELEVATION 27ft

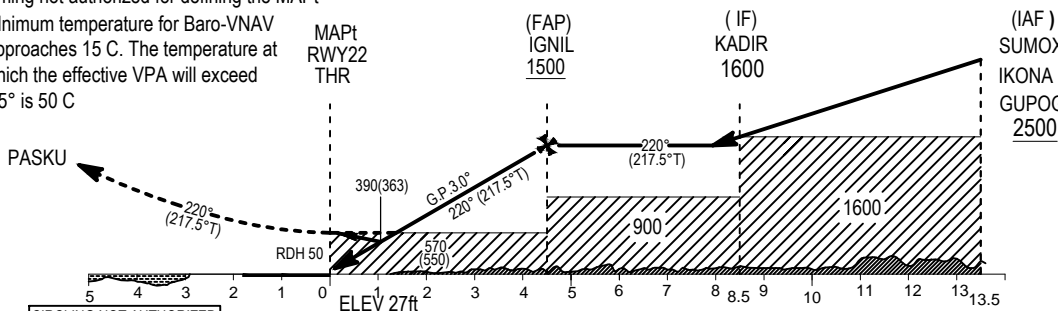
ATIS	127.2
Colombo Director	132.4 120.9
Colombo Tower	118.7 123.8
SMC	121.9

KATUNAYAKE/BANDARANAIKE INTL.  
COLOMBO (VCBI)  
RNP RWY 22



MISSED APPROACH :  
Climb to 2000ft on track 220° to PASKU and hold.  
Timing not authorized for defining the MAPt  
Minimum temperature for Baro-VNAV Approaches 15 C. The temperature at which the effective VPA will exceed 3.5° is 50 C

Transition Altitude 11000  
Transition Level FL130



OCA/OCH				
ACFT CATEGORY	A	B	C	D
LNAV/VNAV DA(DH)	330(303)	340(317)	380(357)	390(363)
LNAV MDA(MDH)	570(550)			

DIST MAPt(RWY22)	4	3	2	1
ALTITUDE	1351	1033	714	396

**CODING TABLES FOR RNP APCH RWY 22**

Segment	FIX	Path Term.	WP	FO	Course/Track ° Mag (°T)	Mag Var.	Distance (NM)	Turn Direction	Altitude (ft)	Speed (IAS/kt)	VPA/RDH	NAV Specs
Transition	IAF	IF	GUPOG	-	310(307.5)	+2.0	5.0	-	+2500	230	-	RNP APCH
	IAF	IF	SUMOX	-	130(127.5)	+2.0	5.0	-	+2500	230	-	RNP APCH
	IAF	IF	IKONA	-	220(217.5)	+2.0	5.0	-	+2500	230	-	RNP APCH
	IF	TF	KADIR	-	220(217.5)	+2.0	4.0	-	1600	-	-	RNP APCH

Segment	FIX	Path Term.	WP	FO	Course/Track ° Mag (°T)	Mag Var.	Distance (NM)	Turn Direction	Altitude (ft)	Speed (IAS/kt)	VPA/RDH	NAV Specs
Approach	IF	TF	KADIR	-	220(217.5)	+2.0	4.0	-	1600	-	-	RNP APCH
	FAP	TF	IGNIL	-	220(217.5)	+2.0	4.5	-	+1500	185	-3.0/50	RNP APCH
	MAPT	TF	RWY22	Y	220(217.5)	+2.0	13.4	-	570	185	-	RNP APCH
	MAHF	CF	PASKU	Y	-	+2.0	-	-	2000	230	-	RNP APCH

**Holding Description**

Path descriptor	Fix identifier (Waypoint name)	Inbound course ° Mag (°T)	Timing (in minutes)	Turn direction	Minimum altitude	Maximum altitude	Speed limit	Magnetic variation	Navigation specification
Hold	IKONA	220(217.5)	1:0	L	2000	FL140	230	+2.0	RNAV 1
Hold	SUMOX	130(127.5)	1:0	L	2500	10000	240	+2.0	RNAV 1
Hold	GUPOG	310(307.5)	1:0	R	2500	10000	240	+2.0	RNAV 1
Hold	PASKU	040(037.5)	1:0	L	2000	FL140	230	+2.0	RNAV 1